



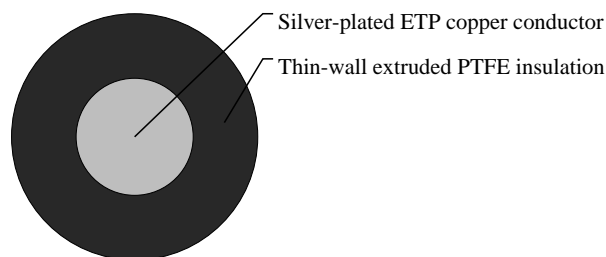
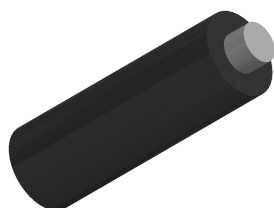
Caledonian

Military Cables

www.caledonian-cables.com

marketing@caledonian-cables.com

MIL-W-81822/6 Type A 1C30AWG



APPLICATIONS

These extruded thin wall PTFE (polyvinylidene fluoride) insulated single-core MIL-W-81822/6 cables are used in back panel wire wrap applications. These wires have solid conductors for wire-wrap applications such as back panel wiring, with a choice of three conductor materials.

VOLTAGE RATING

300V

CABLE CONSTRUCTION

Conductor: Silver-plated ETP copper

Insulation: Thin-wall extruded PTFE

COLOUR CODE

MIL-STD-104(See page 65)

PHYSICAL AND THERMAL PROPERTIES

Temperature Range: 200°C

DIMENSION AND PARAMETERS

| AWG Size | Conductor Stranding | Conductor Diameter | Conductor Diameter | Overall Diameter (min.) | Overall Diameter (min.) | Overall Diameter (max.) | Overall Diameter (max.) | Approx. Weight | Max. Resistance at 20°C |
|----------|---------------------|--------------------|--------------------|-------------------------|-------------------------|-------------------------|-------------------------|----------------|-------------------------|
| | | in | mm | in | mm | in | mm | LBS/MFT | OHMS/MFT |
| 30 | Solid | 0.01 | 0.254 | 0.021 | 0.533 | 0.027 | 0.61 | 0.7 | 108 |